

LTPP Data Analysis

Task Order #03

**“Effect of Multiple Freeze Cycles and Deep Frost Penetration
on Pavement Performance and Cost”**

Quarterly Progress Report

July, August, September 2006

Prepared for:

US Department of Transportation
Federal Highway Administration
400 Seventh Street, S.W.
Washington, D.C. 20590

Detailed Technical Summary of NCE Task Order #03 “Effect of Multiple Freeze Cycles and Deep Frost Penetration on Pavement Performance and Cost”

NCE has completed the vast majority of work on this project. The final report was submitted to FHWA in late May for publication editing. An edited copy of the report was returned to NCE in late August. NCE has reviewed and discussed the editing with FHWA. The final report with edits and comments will be returned to the FHWA by mid October.

Resources Used

Figure A.1 in Appendix A shows the current work schedule for Task Order #03 through September 2006. All primary tasks have been performed and NCE is in the process of completing final copy-edit with comments.

Figure A.2 in Appendix A shows the planned costs versus actual costs for Task Order #03 through September 2006. The current expenditure rate is below the budget rate through the time extension period.

Appendix A

Task Order #03

Work and Costs Summaries

Through September 2006

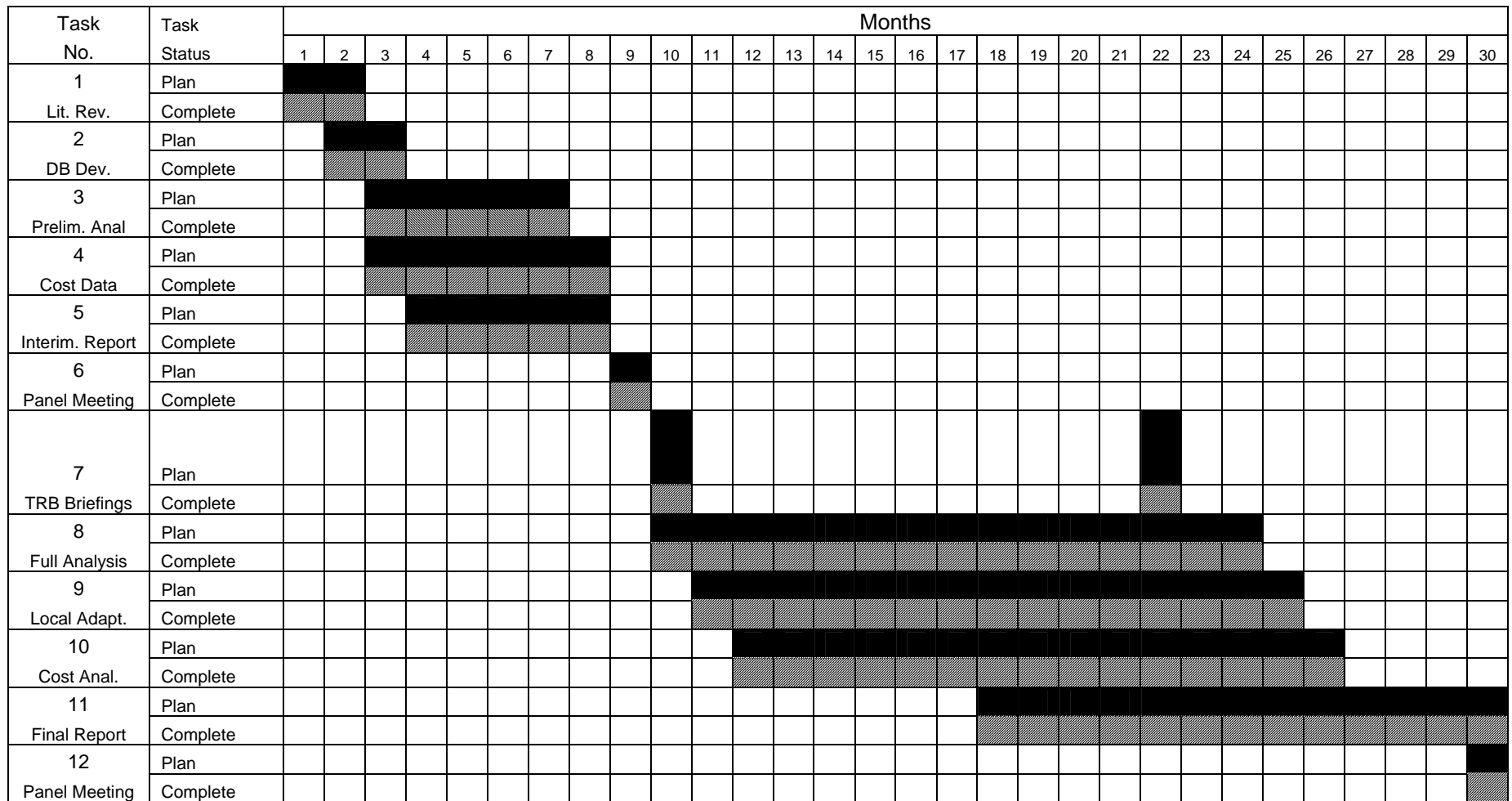


Figure A.1. Work schedule for Task Order #03 through September 2006.